



- Reduce Installation Time By Up To 85%
- High Density, Space Saving Cassette
- Designed for Data Centre Active Hardware

Product Description

With the ever increasing demands for space within cabinets and locations and to help maintain RapidNet as the technology leader in the market we have developed a high density RapidNet loom, specifically aimed at the data centre environment but suitable for all cabinet to cabinet applications.

RapidNet from HellermannTyton is the unique, pre-terminated and pre-tested solution that offers uncompromised performance and quality.

RapidNet can reduce installation time by up to 85% and is designed to meet the exacting standards of mission critical installations where network down time and poor systems performance is not an option.

The RapidNet Cassette to RJ45 Plug (Same length) solution has been specially designed for cabinet to active equipment installations.

The use of the full cross connect solution reduces the risk of damage to the ports on expensive active equipment, when used for server connectivity it simplifies the management of connections to each unit without accessing the rear of the data cabinets.

Supplied with the unique RapidNet cassette at one end and HellermannTyton CAT6 molded plugs at the other, the assemblies can be ordered to any custom length up to 90 meters.

The 6 core bundled cable have been specially designed to eliminate potential alien cross talk issues and uses a clear tape to reduce the bundle, ensuring a high quality, well managed installation.

The 12 Port Cassette to RJ45 Plug (Same length) solution is available in CAT6 and CAT5E standard providing quality and performance for all applications.

Features and Benefits

- Exceeds all ISO/IEC 11801 and ANSI/TIA/EIA 568-C.2 CAT6 and CAT5E performance standards
- Factory pre-terminated and tested
- Reduce installation times by up to 85%
- Manufactured to exacting ISO 9001 quality standards
- RapidNet offers flexibility and choice
- RoHS compliant - lead free
- Backward compatible with Cat5E, Cat5
- Labelling fields for each port

Product Description	Ordering Code	UNS Number
RapidNet 12 port loom Cassette to Plug – CAT6	RN12UC6-CAPLXX-XX.XM	Available on Request
RapidNet 12 port loom Cassette to Plug – CAT5E	RN12UC5E-CAPLXX-XX.XM	Available on Request

Sales: 01604 707420
Website: www.htdata.co.uk

Technical Description

The 12 Port RapidNet Cassette to RJ45 Plug (Same length) presents 12 RJ45 ports in one cassette and two bundles of 6 RJ45 plugs. All RJ45 plugs are the same length from the split label. Overall the length is the same for both bundles and can be specified in half meter lengths.

Designed as a cross connect solution, each plug is individually terminated and tested to ensure the highest possible performance.

Four of the 12 port Cassettes fit into the new 12 port RapidNet patch panel. The Cassettes simply push into the panel, snapping in with a push down clip. A fully loaded panel presents 48 ports in 1U of space.

The panels are available separately and are supplied with Rack Snaps as standard. For partially loaded panels,

The new panel labels are available for download at the alpha label site.

Rear cable management is provided within the cassette with a strain relief bar holding all twelve cables in place protecting the cable and its terminations.

All RapidNet CAT6 and CAT5E cables are made with LSOH material, complying with the latest European Fire Ratings.

Dimensions and Product Construction Specification

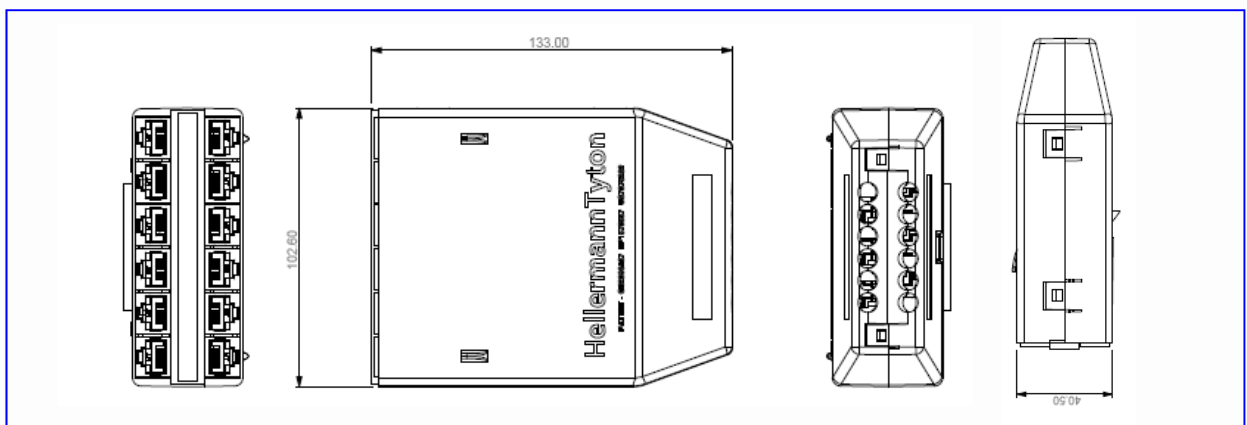
Ordering Code	Height	Width	Depth
RN12UC6-CAPLXX-XX.XM	40.50mm	102.60mm	133.00mm

- Jack life min. 1000 insertions
- Cassette material - PC/ABS
- Disaster Recovery - Terminated and ready for use
- Installation time saving of up to 85%
- Communications Room - Cabinet to Cabinet
- Covered by UK Patent 2398437, EP Patent 1570557, US Patent 7375282
- Sporting Events - Re-usable for different events
- Business As Usual Refurbishment - 5pm - 9am after hours working
- Under Floor and Ceiling Voids - Cabinet to Consolidation Point

Applications Supported

The RapidNet CAT6 solutions are designed to support any voice and data cabling system that is capable of running over their respective systems and are backwards compatible with existing CAT5E, CAT5 and voice network infrastructure.

Technical Drawings

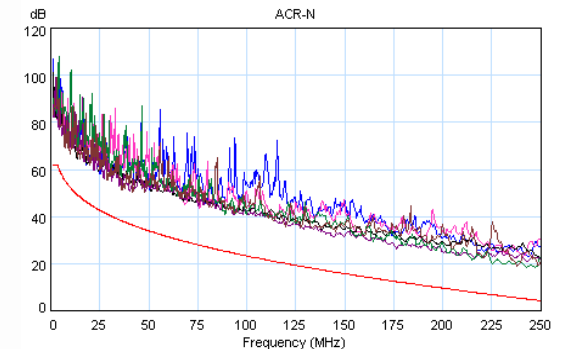
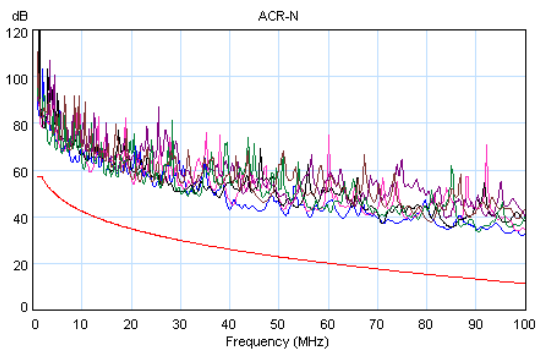
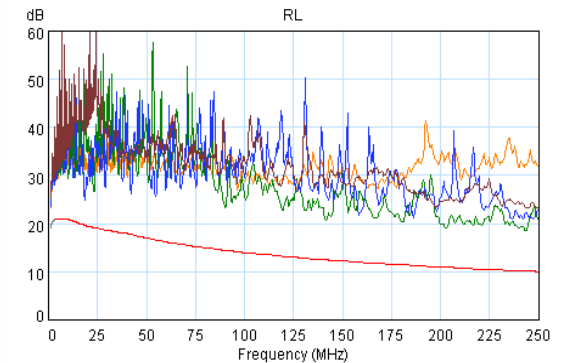
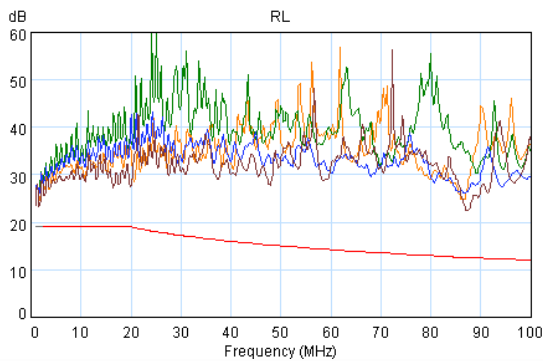
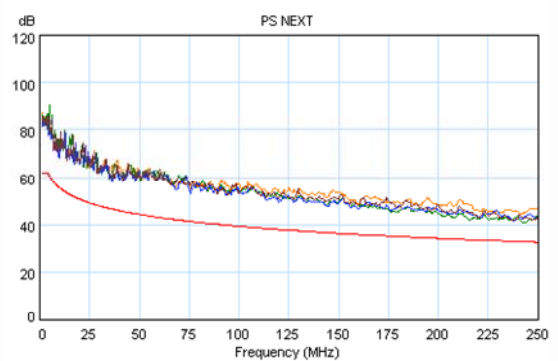
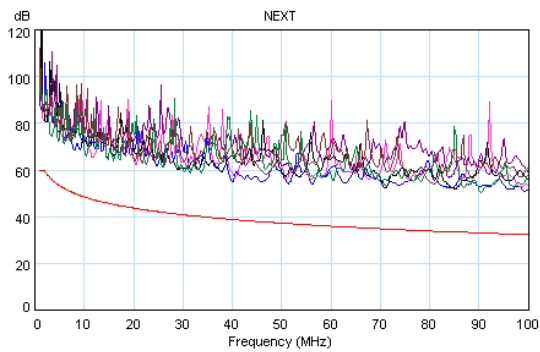


Connecting Hardware Test

Tested from: 1 MHz
 Tested to: 100 MHz
 Standard: ISO/IEC 11801 and
 ANSI/TIA/EIA 568-C.2
 Limits: Cat5E - Connector

Connecting Hardware Test

Tested from: 1 MHz
 Tested to: 250 MHz
 Standard: ISO/IEC 11801 and
 ANSI/TIA/EIA 568-C.2
 Limits: Cat6 - Connector



Tel: +44 (0) 1604 707420
 Web: www.htdata.co.uk
 Email: sales@htdata.co.uk